



Sodium Hydroxide Solution 0.5M - 58310C

Liquid Solutions MyWay

58310C is part of Liquid Solutions MyWay – a portfolio of high-quality sterile filtered liquids in prefilled single-use bags that are in stock and ready-to-ship.

- Manufactured in an ISO 9001:2015 certified facility
- A 12-month shelf life from the date of production (with a target of 24 months)
- Manufactured using Emprove® raw materials (complying with Ph. Eur. and most with USP)
- Intended for bioprocessing and further manufacturing uses

Formulation 58310C - EMPROVE® raw materials

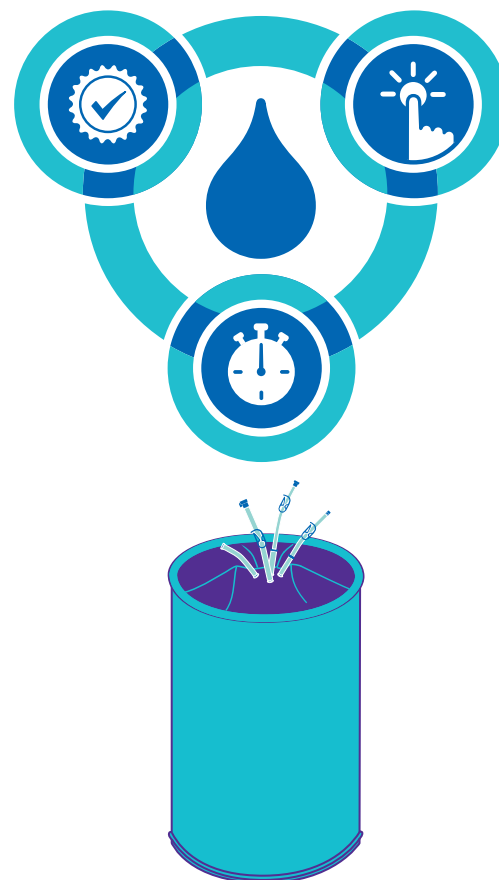
CAS No.	Description	Amount (per L)
1310-73-2	SODIUM HYDROXIDE SOLUTION 50%	26.403 ml
7732-18-5	WATER FOR INJECTION (USP/EP)	to 1 L

Outer packaging

All packaging sizes will be shipped in a stainless steel drum.

Ship testing (ISTA)

To safeguard delivery, all shipping containers were ISTA ship tested using a filled bag in an appropriate outer container. The 1 L and 20 L 2D bags were tested in accordance with ISTA 1A (International Safe Transit Association) that included a vibration and drop test as well as real-time shipping. The 190 L 3D bags were tested in accordance with ISTA 3E (for palletized loads).

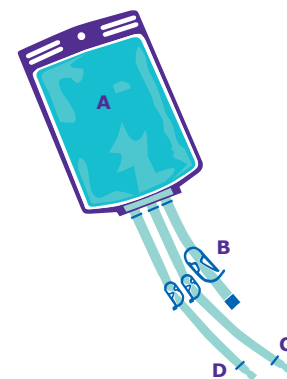


Product

58310C - Sodium hydroxide solution 0.5M	
58310C-1BC / -1BNC	10 x 1 L Bags
58310C-20BC / -20BNC	20 L Bag
58310C-190BC / -190BNC	190 L Bag

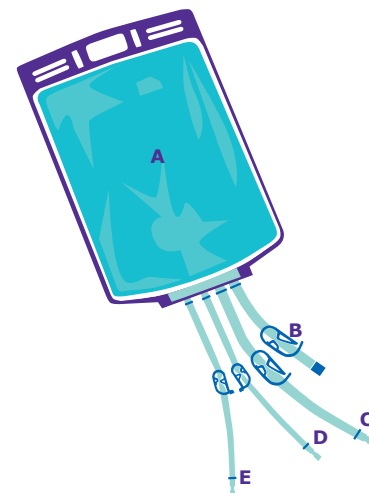
1 L Bag Description

58310C-1BC/ -1BNC	Description	Material
A Bag	1 L Bag	ULDPE
B Filling Line	Filling Line, Sealed End	PVC/Silicone
C Connector 1	1/4 in. x 7/16 in. Tubing, 12 in. Length Coupling Insert 1/4 in. HB, MPC Sealing Cap, MPC	TPE Polycarbonate Polycarbonate
D Connector 2	1/4 in. x 7/16 in. Tubing, 12 in. Length 1/4 in. HB x Female Luer Adapter Male Luer Plug	TPE Polypropylene Polycarbonate



20 L Bag Description

58310C-20BC / -20BNC	Description	Material
A Bag	20 L Bag	ULDPE
B Filling Line	Filling Line, Sealed End	PVC/Silicone
C Connector 1	3/8 in. x 5/8 in. Tubing, 24 in. Length Coupling Insert 3/8 in. HB, MPC Sealing Cap MPC	TPE Polycarbonate Polycarbonate
D Connector 2	1/4 in. x 7/16 in. Tubing, 24 in. Length Coupling Body, 1/4 in. HB, MPC Sealing Plug, MPC	TPE Polypropylene Polycarbonate
E Connector 3	1/4 in. x 3/8 in. Tubing, 3 in. Length 1/4 in. x 1/8 in. HB Reduction Fitting 1/8 in. x 1/4 in. Tubing, 24 in. Length 1/8 in. HB x Female Luer Adapter (Needleless Injection site for non-hazardous products) Male Luer Plug/Cap	TPE Polypropylene TPE Polycarbonate Polycarbonate Polypropylene/ Polycarbonate
Total Tubing Length: approx. 28 in.		



190 L Bag Description

58310C-190BC / -190BNC	Description	Material
A Bag	200 L Bag	ULDPE
B Filling Line	Filling Line, Sealed End	PVC/Silicone
C Connector 1	1/2 in. x 3/4 in. Tubing, 36 in. Length Coupling Body 1/2 in. HB, MPX Sealing Plug MPX	TPE Polycarbonate Polycarbonate
D Connector 2	1/2 in. x 3/4 in. Tubing, 3 in. Length 1/2 in. x 3/8 in. HB Reduction Fitting 3/8 in. x 5/8 in. Tubing, 36 in. Length Coupling Insert, 3/8 in. HB, MPC Sealing Cap, MPC	TPE Polypropylene TPE Polycarbonate Polycarbonate
Total Tubing Length: approx. 40 in.		
E Connector 3	1/2 in. x 3/4 in. Tubing, 3 in. Length 1/2 in. x 1/4 in. HB Reduction Fitting 1/4 in. x 7/16 in. Tubing, 36 in. Length Coupling Body, 1/4 in. HB, MPC Coupling Insert, 1/4 in. HB, MPC 1/4 in. x 7/16 in. Tubing, 3 in. Length 1/4 in. HB Swabable Valve / Needleless Injection Site Male Luer Cap	TPE Polypropylene TPE Polycarbonate Polycarbonate TPE Polycarbonate/Silicone Polycarbonate
Total Tubing Length: approx. 43 in.		

