



# Phosphate Buffered Saline (PBS) – 55120C

## Liquid Solutions MyWay

55120C (PBS) is part of Liquid Solutions MyWay – a portfolio of high-quality sterile filtered liquids in prefilled single-use bags that are in stock and ready-to-ship.

- Manufactured in an ISO 9001:2015 certified facility
- A 12-month shelf life from the date of production (with a target of 24 months)
- Manufactured using Emprove® raw materials (complying with Ph. Eur. and most with USP)
- Intended for bioprocessing and further manufacturing uses

## Formulation 55120C - EMPROVE® raw materials

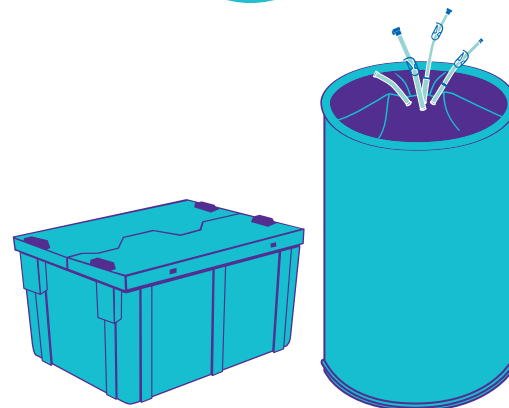
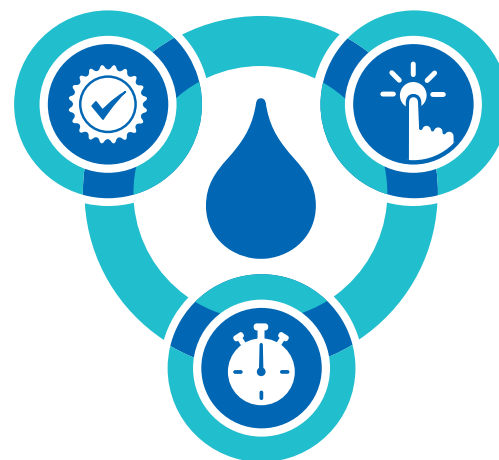
CAS No.	Description	Amount (g/L)
10028-24-7	SODIUM PHOSPHATE DIB.2H <sub>2</sub> O	3.76 g
7778-77-0	POTASSIUM PHOSPHATE	0.2 g
7447-40-7	POTASSIUM CHLORIDE	0.2 g
7647-14-5	SODIUM CHLORIDE	8.0 g
7732-18-5	WATER FOR INJECTION (USP/EP)	to 1 L

## Outer packaging

The 1 L & 20 L bags will be shipped in a plastic box and the 200 L bags will be shipped in a plastic drum.

## Ship testing (ISTA)

To safeguard delivery, all shipping containers were ISTA ship tested using a filled bag in an appropriate outer container. The 1 L and 20 L 2D bags were tested in accordance with ISTA 1A (International Safe Transit Association) that included a vibration and drop test as well as real-time shipping. The 200 L 3D bags were tested in accordance with ISTA 3E (for palletized loads).



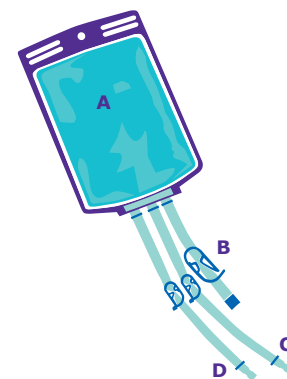
## Product

### 55120C – Phosphate Buffered Saline (PBS)

55120C-1BC / -1BNC	10 x 1 L Bags
55120C-20BC / -20BNC	20 L Bag
55120C-200BC / -200BNC	200 L Bag

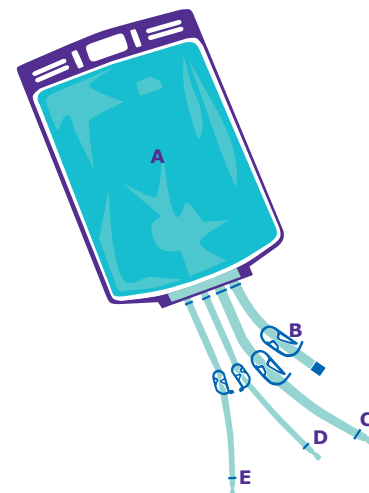
## 1 L Bag Description

55120C-1BC / -1BNC	Description	Material
A Bag	1 L Bag	ULDPE
B Filling Line	Filling Line, Sealed End	PVC/Silicone
C Connector 1	1/4 in. x 7/16 in. Tubing, 12 in. Length Coupling Insert 1/4 in. HB, MPC Sealing Cap, MPC	TPE Polycarbonate Polycarbonate
D Connector 2	1/4 in. x 7/16 in. Tubing, 12 in. Length 1/4 in. HB x Female Luer Adapter Male Luer Plug	TPE Polypropylene Polycarbonate



## 20 L Bag Description

55120C-20BC / -20BNC	Description	Material
A Bag	20 L Bag	ULDPE
B Filling Line	Filling Line, Sealed End	PVC/Silicone
C Connector 1	3/8 in. x 5/8 in. Tubing, 24 in. Length Coupling Insert 3/8 in. HB, MPC Sealing Cap MPC	TPE Polycarbonate Polycarbonate
D Connector 2	1/4 in. x 7/16 in. Tubing, 24 in. Length Coupling Body, 1/4 in. HB, MPC Sealing Plug, MPC	TPE Polypropylene Polycarbonate
E Connector 3	1/4 in. x 3/8 in. Tubing, 3 in. Length 1/4 in. x 1/8 in. HB Reduction Fitting 1/8 in. x 1/4 in. Tubing, 24 in. Length 1/8 in. HB x Female Luer Adapter (Needleless Injection site for non-hazardous products) Male Luer Plug/Cap	TPE Polypropylene TPE Polycarbonate Polycarbonate Polypropylene/ Polycarbonate
Total Tubing Length: approx. 28 in.		



## 200 L Bag Description

55120-200BC / -200BNC	Description	Material
A Bag	200 L Bag	ULDPE
B Filling Line	Filling Line, Sealed End	PVC/Silicone
C Connector 1	1/2 in. x 3/4 in. Tubing, 36 in. Length Coupling Body 1/2 in. HB, MPX Sealing Plug MPX	TPE Polycarbonate Polycarbonate
D Connector 2	1/2 in. x 3/4 in. Tubing, 3 in. Length 1/2 in. x 3/8 in. HB Reduction Fitting 3/8 in. x 5/8 in. Tubing, 36 in. Length Coupling Insert, 3/8 in. HB, MPC Sealing Cap, MPC	TPE Polypropylene TPE Polycarbonate Polycarbonate
Total Tubing Length: approx. 40 in.		
E Connector 3	1/2 in. x 3/4 in. Tubing, 3 in. Length 1/2 in. x 1/4 in. HB Reduction Fitting 1/4 in. x 7/16 in. Tubing, 36 in. Length Coupling Body, 1/4 in. HB, MPC Coupling Insert, 1/4 in. HB, MPC 1/4 in. x 7/16 in. Tubing, 3 in. Length 1/4 in. HB Swabable Valve / Needleless Injection Site Male Luer Cap	TPE Polypropylene TPE Polycarbonate Polycarbonate TPE Polycarbonate/Silicone Polycarbonate
Total Tubing Length: approx. 43 in.		

