

Polyacrylate Film Fiber for Solid Phase Microextraction of Polar Semivolatiles from Water

Our polyacrylate-coated fiber used in the solid phase microextraction technique effectively extracts difficult polar compounds, such as phenols, from water samples. This fiber overcomes the problems of removing polar analytes from a polar matrix. SPME is a simple, practical, and cost-effective extraction technique that meets US EPA specifications.

Key Words:

- solid phase microextraction • polyacrylate
- semivolatile compounds • polar compounds • phenols

Extracting polar semivolatile compounds from water samples can be a difficult operation for the environmental chemist. Attempts to isolate phenols and other polar semivolatiles using conventional extraction methods (liquid-liquid extraction, solid phase extraction, and supercritical fluid extraction) require either high-priced instrumentation or extensive training and time, and often are not successful.

Solid phase microextraction[®] (SPME) is a simple, cost-effective, time-saving extraction technique developed by Janusz Pawliszyn and associates at the University of Waterloo, Ontario, Canada. In SPME, a phase-coated fiber contained within a syringe is exposed to the sample, allowing the analytes to adsorb in the fiber coating. Adsorption equilibrium is attained in 2 to 15 minutes. After sample adsorption, the fiber is withdrawn into the needle, and the needle is removed from the sample vial and introduced into the GC injector, where the adsorbed analytes are thermally desorbed and analyzed.

SPME has important advantages. It is quick, highly sensitive, and versatile (SPME can be used with any gas chromatograph or GC-mass spectrometer, with split/splitless or on-column injection). No solvents or complicated apparatus are required. Any problems associated with solvent use and disposal are largely eliminated.

Supelco offers an SPME fiber assembly coated with 85 μ m of polyacrylate that easily extracts polar analytes, such as phenols, from water in less than 20 minutes.

To obtain good extraction efficiency, it is essential to lower the sample pH to 2 and saturate the sample with sodium chloride. These modifications can increase response by 10- to 500-fold by driving the equilibrium toward the fiber. Under these conditions, an 85 μ m polyacrylate film fiber was used to extract phenols at 50ppb from a 1.8mL sample (Figure A). High desorption temperatures resulted in sharp peaks. Our low volume injection port liner (0.75mm ID) allowed rapid transfer of the phenols to the GC column, contributing to the excellent quality of the peak shapes. Using low-bleed, pre-drilled Thermogreen[™] LB-2 septa reduced septa coring that can cause extraneous peaks.

Table 1 shows the response factors over a concentration range of 5 to 200ppb. Note that the standard deviation is improved if the calibration curve is calculated from 10 to 200ppb. US Environmental Protection Agency (US EPA) methods 604 and 8040 list tables showing %RSDs in the 20s and 30s. SPME yielded excellent %RSDs, under 20 for most of the analytes. The only compound with %RSDs greater than 30 was the more polar 2,4-dinitrophenol.

The reproducibility of the SPME extraction technique is illustrated in Table 2. Conducting this evaluation with three fibers demonstrated the consistency between fibers and precision of the analysis. Except for the nitro-substituted phenols, the %RSDs were quite low.

In addition to the polyacrylate-coated fiber, Supelco offers SPME fiber assemblies with polydimethylsiloxane (PDMS) film. Our 100 μ m PDMS fiber effectively extracts volatile, low molecular weight organic compounds. A 7 μ m PDMS fiber offers faster equilibration of less volatile analytes and a higher desorption temperature limit (320°C vs. 280°C). Other phases are available for different types of applications.

The SPME devices can be used in both manual and autosampling modes. All are reusable. •

Figure A. Phenols Extracted at 50ppb, Using an 85 μ m Polyacrylate SPME Fiber

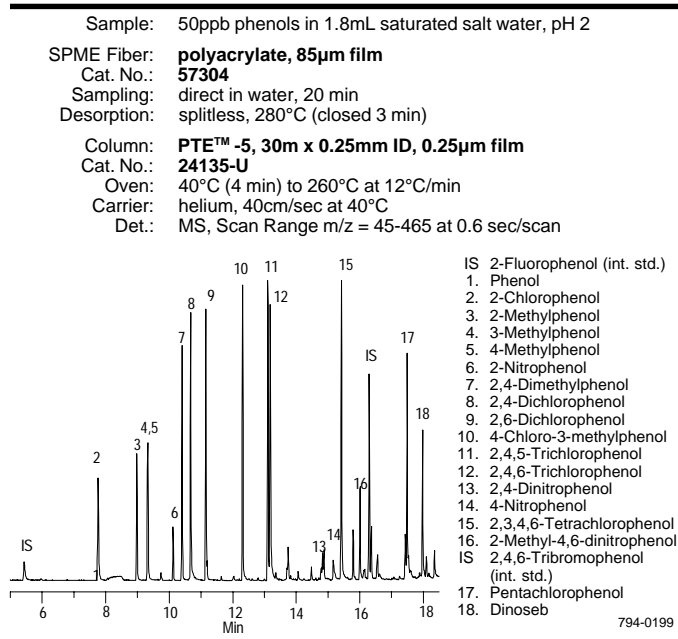


Table 1. Summary of Calibration Curve Response Factors for Phenols by SPME*

	5ppb to 200ppb			10ppb to 200ppb		
	Avg.	S.D.	%RSD	Avg.	S.D.	%RSD
2-Fluorophenol (int. std.)						
Phenol	0.33	0.04	11.4%	0.32	0.02	7.5%
2-Chlorophenol	1.15	0.05	4.6%	1.15	0.06	4.9%
2-Methylphenol	0.69	0.03	5.1%	0.68	0.03	5.1%
3- & 4-Methylphenol	1.18	0.08	6.9%	1.19	0.08	7.1%
2-Nitrophenol	0.29	0.08	25.8%	0.30	0.07	22.7%
2,4-Dimethylphenol	1.15	0.10	8.6%	1.14	0.10	8.8%
2,4-Dichlorophenol	1.32	0.14	10.8%	1.34	0.13	9.7%
2,6-Dichlorophenol	1.33	0.14	10.5%	1.35	0.13	9.5%
4-Chloro-3-methylphenol	0.98	0.08	7.9%	0.98	0.08	8.3%
2,4,5-Trichlorophenol	1.01	0.06	6.3%	1.00	0.07	6.6%
2,4,6-Trichlorophenol	1.01	0.09	8.4%	1.00	0.08	8.3%
2,4-Dinitrophenol	0.08	0.04	50.3%	0.08	0.04	44.7%
4-Nitrophenol	0.20	0.03	17.5%	0.20	0.03	15.6%
2,3,4,6-Tetrachlorophenol	0.70	0.13	18.7%	0.68	0.12	18.1%
2-Methyl-4,6-dinitrophenol	0.26	0.09	36.1%	0.28	0.08	30.2%
2,4,6-Tribromophenol (int. std.)						
Pentachlorophenol	0.31	0.09	29.3%	0.29	0.08	27.9%
Dinoseb	0.27	0.08	29.1%	0.29	0.07	25.0%

Table 2. Summary of Response Factors for Phenols at 50ppb*

Triplicate extractions for 3 fibers (n = 9)

	Avg.	S.D.	%RSD
2-Fluorophenol (int. std.)			
Phenol	0.44	0.05	12.3%
2-Chlorophenol	1.60	0.17	10.5%
2-Methylphenol	0.81	0.10	13.0%
3- & 4-Methylphenol	1.77	0.22	12.5%
2-Nitrophenol	0.49	0.05	10.1%
2,4-Dimethylphenol	1.60	0.23	14.2%
2,4-Dichlorophenol	1.06	0.13	12.7%
2,6-Dichlorophenol	1.02	0.12	12.1%
4-Chloro-3-methylphenol	0.74	0.09	11.8%
2,4,5-Trichlorophenol	0.79	0.09	11.3%
2,4,6-Trichlorophenol	0.83	0.09	10.8%
2,4-Dinitrophenol	0.06	0.02	25.5%
4-Nitrophenol	0.14	0.03	21.0%
2,3,4,6-Tetrachlorophenol	0.69	0.08	11.9%
2-Methyl-4,6-dinitrophenol	0.18	0.02	13.2%
2,4,6-Tribromophenol (int. std.)			
Pentachlorophenol	0.42	0.09	21.3%
Dinoseb	0.27	0.04	14.3%

* Extracted from saturated salt water, pH 2.

Ordering Information:

Description	Cat. No.
SPME Holder	
First time users must order both holder and fiber assembly.	
Holder is reusable indefinitely.	
For manual sampling	57330-U
For Varian 8100/8200 AutoSampler [®] or SPME/HPLC interface	57331
SPME Fiber Assembly (pk. of 3)	
85µm polyacrylate coating for polar semivolatiles	
For manual sampling	57304
For Varian 8100/8200 AutoSampler or SPME/HPLC interface	57305
Fiber Assortment Kit 1 (other kits available)	
One fiber each of 85µm polyacrylate coating, and 100µm and 7µm polydimethylsiloxane coating.	
For manual sampling	57306
For Varian 8100/8200 AutoSampler or SPME/HPLC interface	57307

- ▲ Requires Varian SPME upgrade kit.
- Technology licensed exclusively to Supelco (US patent 5,691,206; European patent # 0523092).
- Fiber lifetime depends on conditions of use. 100+ uses have been achieved.

Trademarks

PTE, Thermogreen — Sigma-Aldrich Co.

Contact our Technical Service Department (phone 800-359-3041 or 814-359-3041, FAX 800-359-3044 or 814-359-5468) for expert answers to your questions.

Note 17

For more information, or current prices, contact your nearest Supelco subsidiary listed below. To obtain further contact information, visit our website (www.sigma-aldrich.com), see the Supelco catalog, or contact Supelco, Bellefonte, PA 16823-0048 USA.

ARGENTINA · Sigma-Aldrich de Argentina, S.A. · Buenos Aires 1119 AUSTRALIA · Sigma-Aldrich Pty. Ltd. · Castle Hill NSW 2154 AUSTRIA · Sigma-Aldrich Handels GmbH · A-1110 Wien
 BELGIUM · Sigma-Aldrich N.V./S.A. · B-2880 Bornem BRAZIL · Sigma-Aldrich Quimica Brasil Ltda. · 01239-010 São Paulo, SP CANADA · Sigma-Aldrich Canada, Ltd. · 2149 Winston Park Dr., Oakville, ON L6H 6J8
 CZECH REPUBLIC · Sigma-Aldrich s.r.o. · 186 00 Praha 8 DENMARK · Sigma-Aldrich Denmark A/S · DK-2665 Vallensbaek Strand FINLAND · Sigma-Aldrich Finland/YA-Kemia Oy · FIN-00700 Helsinki
 FRANCE · Sigma-Aldrich Chimie · 38297 Saint-Quentin-Fallavier Cedex GERMANY · Sigma-Aldrich Chemie GmbH · D-82041 Deisenhofen GREECE · Sigma-Aldrich (o.m.) Ltd. · Ilioupoli 16346, Athens
 HUNGARY · Sigma-Aldrich Kft. · H-1067 Budapest INDIA · Sigma-Aldrich Co. · Bangalore 560 048 IRELAND · Sigma-Aldrich Ireland Ltd. · Dublin 24 ISRAEL · Sigma Israel Chemicals Ltd. · Rehovot 76100
 ITALY · Sigma-Aldrich s.r.l. · 20151 Milano JAPAN · Sigma-Aldrich Japan K.K. · Chuo-ku, Tokyo 103 KOREA · Sigma-Aldrich Korea · Seoul MALAYSIA · Sigma-Aldrich (M) Sdn. Bhd. · Selangor
 MEXICO · Sigma-Aldrich Quimica S.A. de C.V. · 50200 Toluca NETHERLANDS · Sigma-Aldrich Chemie BV · 3330 AA Zwijndrecht NORWAY · Sigma-Aldrich Norway · Torshov · N-0401 Oslo
 POLAND · Sigma-Aldrich Sp. z o.o. · 61-663 Poznań PORTUGAL · Sigma-Aldrich Quimica, S.A. · Sintra 2710 RUSSIA · Sigma-Aldrich Russia · Moscow 103062 SINGAPORE · Sigma-Aldrich Pte. Ltd.
 SOUTH AFRICA · Sigma-Aldrich (pty) Ltd. · Jet Park 1459 SPAIN · Sigma-Aldrich Quimica, S.A. · 28100 Alcobendas, Madrid SWEDEN · Sigma-Aldrich Sweden AB · 135 70 Stockholm
 SVITZERLAND · Supelco · CH-9471 Buchs UNITED KINGDOM · Sigma-Aldrich Company Ltd. · Poole, Dorset BH12 4QH
 UNITED STATES · Supelco · Supelco Park · Bellefonte, PA 16823-0048 · Phone 800-247-6628 or 814-359-3441 · Fax 800-447-3044 or 814-359-3044 · email: supelco@sial.com

Supelco is a member of the Sigma-Aldrich family. Supelco products are sold through Sigma-Aldrich, Inc. Sigma-Aldrich warrants that its products conform to the information contained in this and other Sigma-Aldrich publications. Purchaser must determine the suitability of the product for a particular use. Additional terms and conditions may apply. Please see the reverse side of the invoice or packing slip.