

## CONFIDENCE ✓

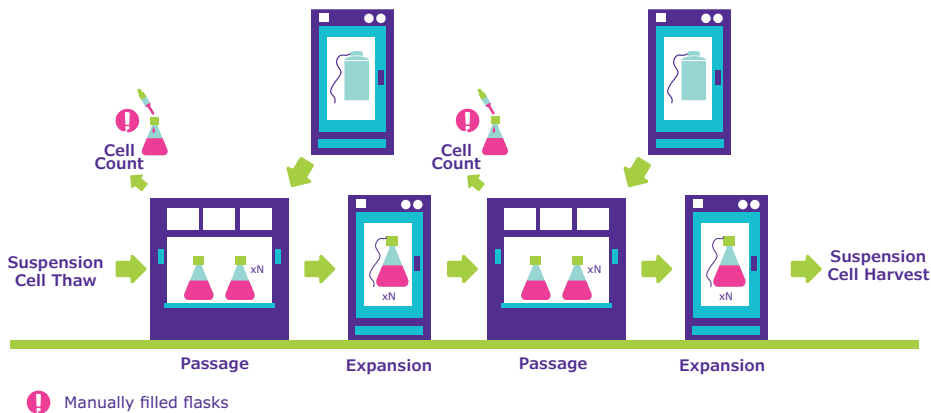
### Closed processing cell bank manufacturing

Choosing a partner you can trust with your cell bank manufacturing is critical. Closed processing is in line with regulatory guidance and is preferred for its ability to **mitigate cross-contamination risk**.

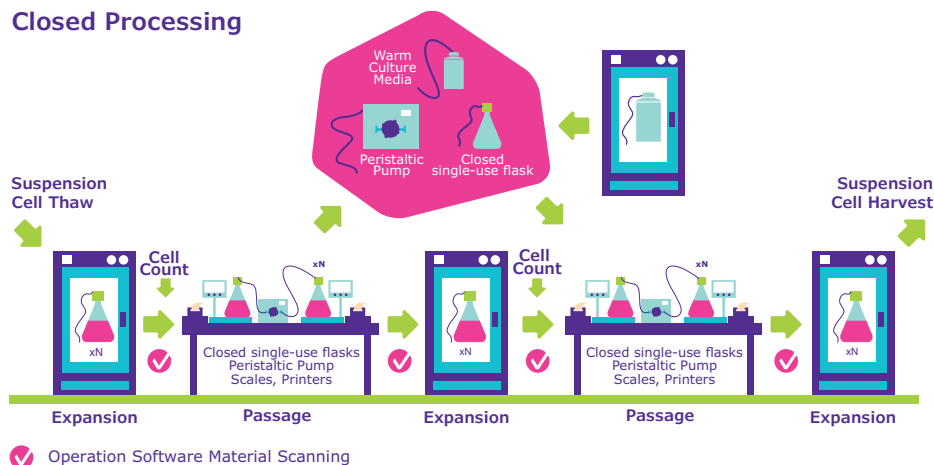
Compared to traditional processing, closed processing limits the possibility of contaminants by closing the steps in the expansion process.

### Comparison of closed and traditional processing

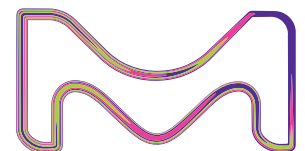
#### Traditional Processing



#### Closed Processing



Contact our experts at:  
[SigmaAldrich.com/cellbanking](https://SigmaAldrich.com/cellbanking)



Reduce the risk of cross-contamination in your cell bank manufacturing by booking a GMP closed processing slot for your suspension cell lines.



- 40+ years experience in manufacturing of master and working cell banks
- Experience with among others, CHO, Sf9, HEK 293, MDCK for closed processing
- In line with global regulatory guidelines
- Reduces risk of contamination by closing the steps in the expansion process
- Enables automation, mitigating manual errors

## GMP closed processing slots available to meet your needs

Discover our related services:



**BioRepository**



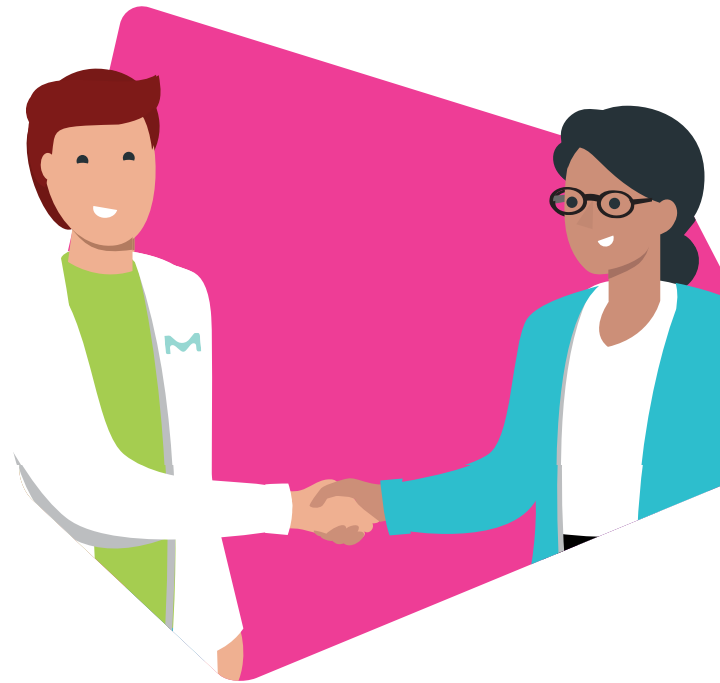
**Cell Line Characterization**



**Genetic Stability**



Contact our experts at:  
[SigmaAldrich.com/cellbanking](https://SigmaAldrich.com/cellbanking)



To place an order or receive technical assistance in Europe.

**Europe, UK:**  
Todd Campus  
West of Scotland Science Park  
Glasgow, G20 0XA | Scotland  
Tel: +44 (0)141 946 9999  
info@bioreliance.com

**North America:**  
14920 Broschart Road  
Rockville, MD 20850-3349 | USA  
Tel: 301 738 1000  
info@bioreliance.com

**Singapore:**  
#2 Science Park Drive  
#04-01/12 Ascent Building, Tower A  
Singapore 118222  
info@bioreliance.com

**China:**  
15-18F, No.3, Building C,  
The New Bund World Trade Center (Phase II)  
Lane 227 Dongyu Road, Pudong New District  
Shanghai, China  
info@bioreliance.com

© 2022 Merck KGaA, Darmstadt, Germany and/or its affiliates. All Rights Reserved. MilliporeSigma, the vibrant M, and BioReliance are trademarks of Merck KGaA, Darmstadt, Germany or its affiliates. All other trademarks are the property of their respective owners. Detailed information on trademarks is available via publicly accessible resources.

