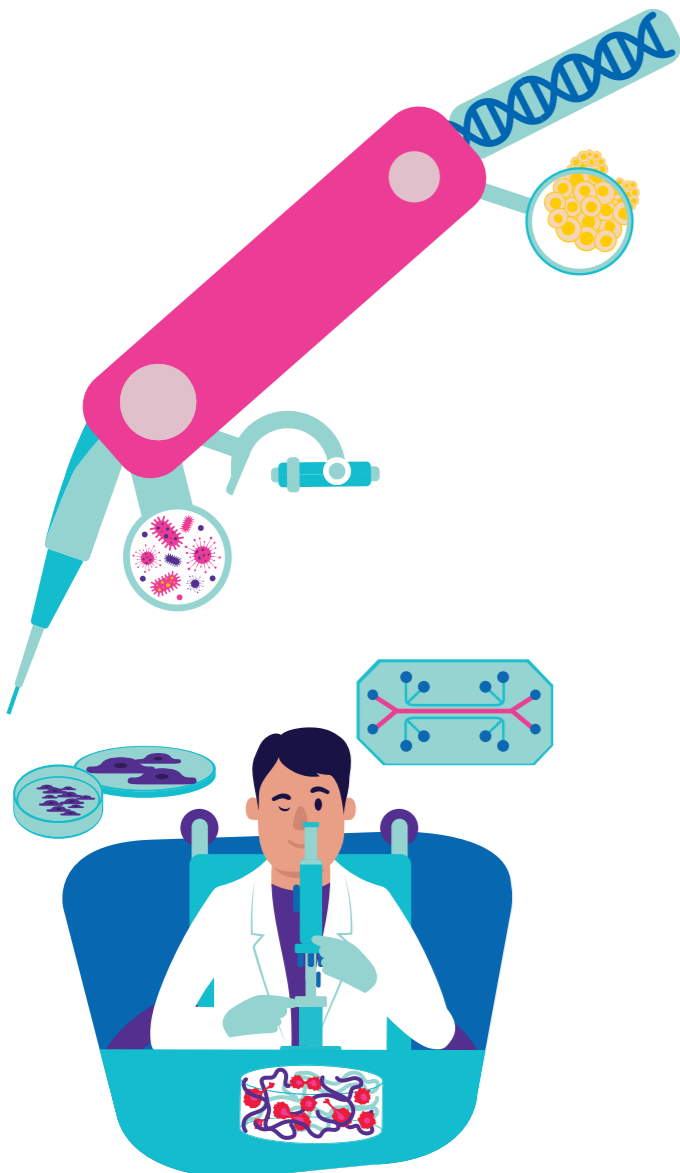


BREAK NEW GROUND in oncology

Forge the path to a cure with advanced modeling and profiling tools for cancer research.



MANIPULATE

- CRISPR KO
- shRNA
- siRNA
- PROTAC® Degraders
- esiRNA
- Growth Factors and Cytokines
- Bioactive Small Molecules
- Cell Cycle Bioactive Small Molecules
- Bioactive Small Molecules for Kinase Phosphatase Biology
- Bioactive Small Molecules for Gene Regulation
- Bioactive Small Molecules for Apoptosis
- miRNA mimics



EXPLORE

- 5 Reasons Cancer Researchers Adopt 3D Cell Culture
- 3D Cell Culture Tools and Techniques
- 3D Cell Culture Workflow Tools
- Cancer Stem Cells: Targets for Cancer Therapy
- Organoid Disease Models: 3D Organoid Culture
- Cell Migration Assay Guidance
- Barrier Formation and Permeability Assays
- Hepatotoxicity/Cytotoxicity Assays
- Dynamic Live Cell Imaging
- Tumorsphere Protocol
- Immuno-Oncology Research Tools and Solutions
- Ribonucleoprotein (RNP)
- Validating CRISPR/Cas9-Mediated Gene Editing
- SeqPlex™-I Whole Transcriptome Amplification Kits
- CRISPR Essentials: MISSION® CRISPR gRNAs
- Getting Started with MISSION® shRNA
- Article: Prestige Antibodies® in Breast Cancer Research
- Brochure: Prestige Antibodies® in Colorectal Cancer Research
- Post Translational Modification
- Enzymatic Assay of Neuraminidase

MODEL

- Primary Cell Culture
- PBMCs
- Stem Cells
- Organoids
- Cancer Cell lines
- Spheroid Media
- Stem Cell Media
- Cancer Cell Media
- Classic Cell Media
- Sera
- Cell Growth Supplements and Reagents
- ACF Media and Supplements
- Dissociation Reagents
- Sterile Filtration
- Mycoplasma Kits
- Cryopreservation
- Inserts
- ECM
- Hydrogels
- Cell Culture Plastics
- ULA Plates
- Microwell Plates
- MilliSentials™ Lab Equipment



MEASURE

- Cell Counting
- Invasion/Migration Assays
- Proliferation Assays
- Apoptosis Assays
- Hypoxia Assays
- Autophagy Assays
- Angiogenesis Assays
- Imaging Equipment
- Live Cell Probes and Dyes
- IHC/ICC
- Nucleic Acid Purification
- qPCR
- NGS
- Epigenetic Profiling
- scRNA-seq
- Primers and Probes
- Protein Purification
- Glycobiology
- Protein Electrophoresis & Western Blot
- Antibodies
- Duolink® PLA
- ELISA
- MILLIPLEX® Multiplex Immunoassays
- Analytical Sample Prep
- LC-MS



For Research Use Only. Not For Use In Diagnostic Procedures.

MilliporeSigma is the U.S. and Canada Life Science business of Merck KGaA, Darmstadt, Germany.

© 2023 Merck KGaA, Darmstadt, Germany and/or its affiliates. All Rights Reserved. MilliporeSigma, the vibrant M, Duolink, MILLIPLEX, MilliSentials, MISSION, and Prestige Antibodies are trademarks of Merck KGaA, Darmstadt, Germany or its affiliates. All other trademarks are the property of their respective owners. Detailed information on trademarks is available via publicly accessible resources. 51140 09/2023