

Application Report 266

LC-MS Analysis of Sucralose and Sucrose Octacetate on Ascentis™ RP-Amide

Sucralose, a popular artificial sweetener and sucrose octacetate, a compound that can be used as an internal standard are separated on Ascentis RP-Amide and detected by mass spectrometry.

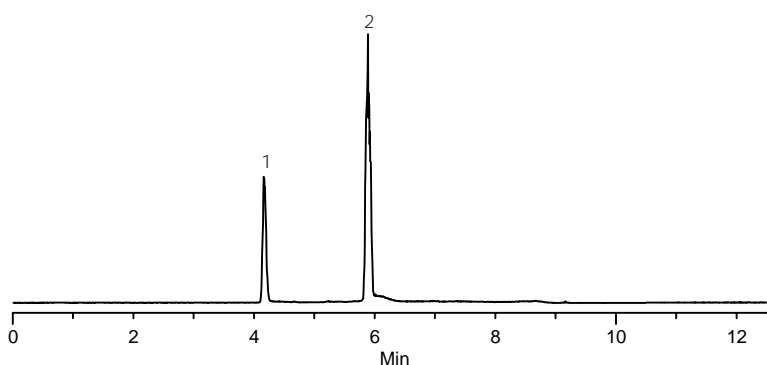
Key Words

sucralose, 56038-13-2, sucrose octacetate, 25,260-3, 126-14-7, 39253, 34967, LC-MS, Ascentis RP-Amide, 565300-U, Splenda, artificial sweeteners

Author: Carmen T. Sanatsania

Acquisition System: W2695

Notebook Reference: 1549-75



G003004

Conditions

column: Ascentis RP-Amide, 5 cm x 2.1 mm I.D., 3 μm particles (565300-U)
mobile phase A: 20 nanomolar NaCl in water
mobile phase B: acetonitrile
flow rate: 0.2 mL/min.
temp.: 35 °C
det.: MS, (+) ESI, Selected Ion Recording Mode
injection: 5 μL
sample: as indicated in 90:10 water:acetonitrile
gradient:

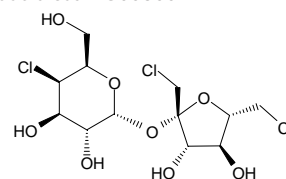
Min	%A	%B
0	90	10
1	90	10
5	0	100
6	0	100
7	90	10

Peak IDs

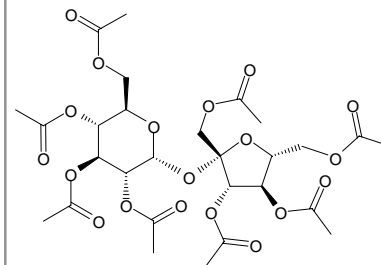
1. Sucralose (10 μg/mL) m/z 419.0 (M+Na)⁺
2. Sucrose Octacetate (10 μg/mL) m/z 701.2 (M+Na)⁺

Structures

Sucralose - G003002



Sucrose Octacetate - G003003



Ascentis is a trademark of Sigma-Aldrich Co.